



NETFORKS

1. Slide the rod through the tube on the back of the forks. Then, install the rod collars on the outside of the forks and tighten the bolts.
2. Position the forks upright on a hard-flat surface. Then bring your loader bucket into position (See Note 1). Using the rod as a fixture, place the mounting brackets across the top of the bucket.

Note 1: Position the loader bucket so that the cutting edge is a MINIMUM of 2" above the floor. Make sure the cutting edge is touching the back of the forks, then roll the bucket forward until the spill guard is roughly 1/2" away from the back of the forks.

3. Hook the mounting brackets over the rod and space them equally across the top of the bucket. (If your kit only has three mounting brackets, place one in the center of the rod and position the two end brackets about 1" from the end of the rod.

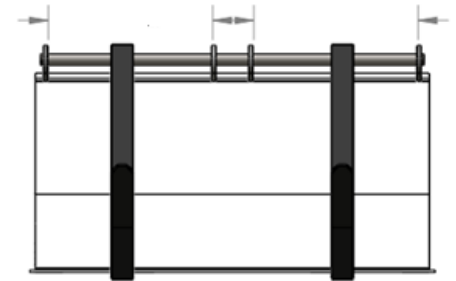
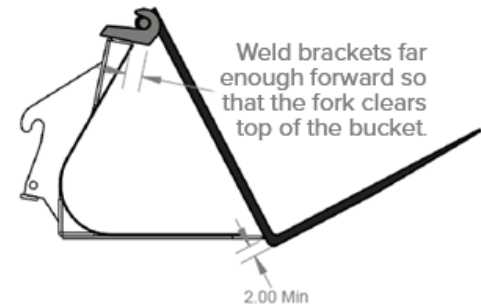
For minor variations, raise or lower the bucket so the mounting brackets contact the top of the bucket while properly engaged over the rod.

Note 2: All the mounting brackets should be positioned so that the angle of the slot is the same and the rod is in contact with the bottom of the slot.

If the top of the bucket is curved or there are stiffening members along the top, trim the bottom of the mounting brackets to fit the contour of the bucket without having a gap exceeding 1/8". The mounting brackets must be mounted perpendicular to the top of the bucket.

4. Weld the mounting brackets to the top of the bucket to hold them temporarily in position. Roll the bucket forward to check if they can be positioned to remove or install the fork tines. Trim bottom edges of mounting brackets if required to correct alignment.

BUCKET FORKS Mounting Instructions



Complete welding the Mounting Brackets to the top of the Bucket:

**Mounting brackets
3/8" thick require
1/4" fillet welds
down both sides.**

**Mounting brackets
3/4" thick require
3/8" fillet welds
down both sides.**